

# Protein and RNA Multiple Sequence Alignment and Analysis with Jalview

## Residential Course & Hackathon

21st - 22nd January 2013 at the EMBL-EBI

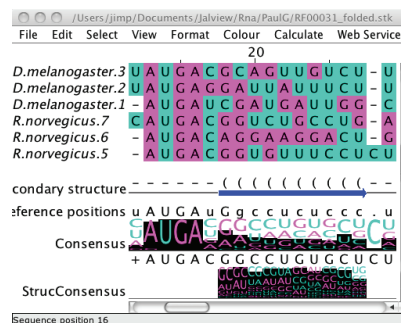
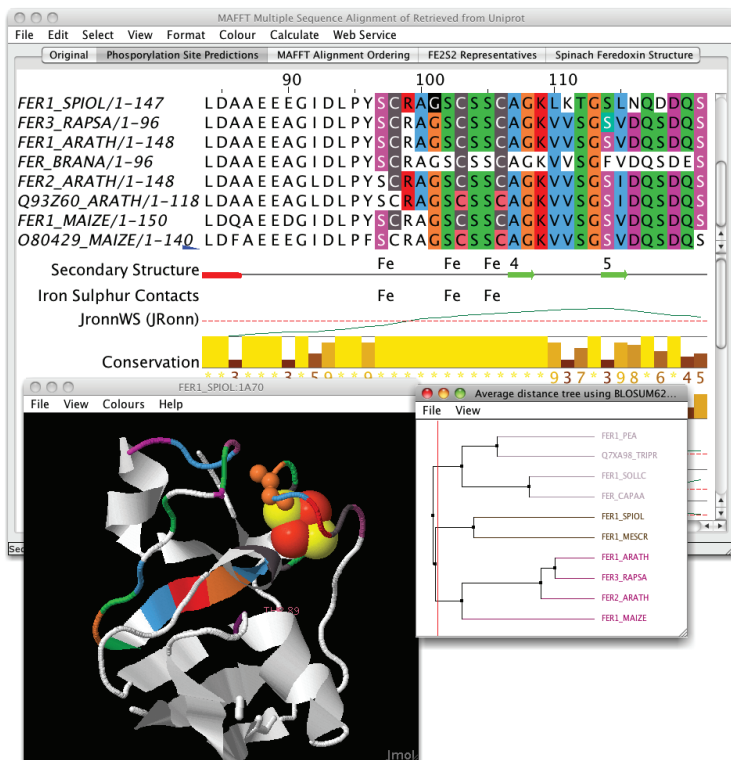
Wellcome Trust Genome Campus, Cambridge, UK.

**Jalview** is a workbench for creating and analysing sequence alignments that is used for teaching and research worldwide.

It works with proteins, DNA and RNA, and can visualise phylogenies, 3D structures and annotation on the alignment.

In this two day workshop, learn how to:

- Create, analyse and annotate alignments for publication
- Visualize protein and nucleotide annotation and molecular structure
- Predict secondary structure, disordered regions and functional sites in proteins
- Set up your own virtual bioinformatics analysis server
- Add jalview to your website
- Create new Jalview services
- Extend Jalview for your own needs



For full details, go to <http://bit.ly/Jalview2013>

Registration costs £30 including lunches, refreshments and evening dinner.